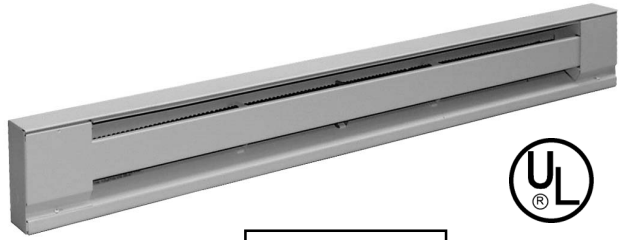


2900A Series Aluminum Element Baseboard Heater



- Available in white or ivory with aluminum rod heating element and aluminum fins
- Powder coated 22ga. steel front with 20 ga. junction boxes located on each end of the heater - junction boxes contain quick connect cable clamps and 6" ground lead wires
- Over-temperature thermal limit extends entire length of heated area
- A full length wireway provided along the back of the heater - optional wireway covers are available
- Heater can be mounted to the wall by using the key hole knockouts every 4" at the back of the heater
- Optional built-in thermostats install in the junction box covers
- HEIGHT - 6" DEPTH - 2 1/2"
- FOR HIGH ALTITUDE MODELS ADD HA SUFFIX

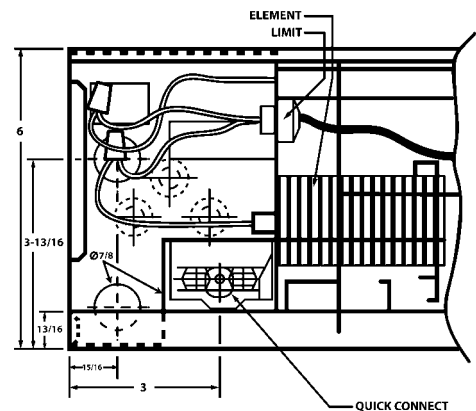
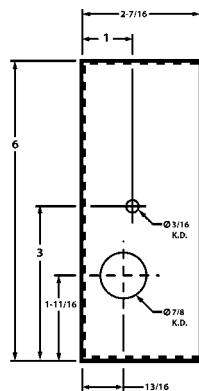
SUBMITTAL DATA, 2900A SERIES

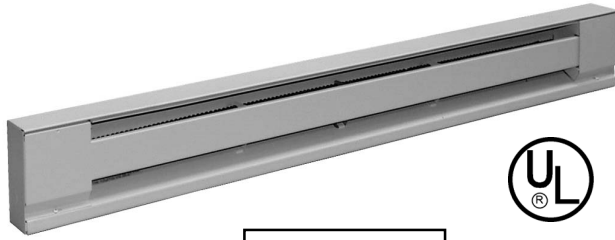
AGENT	PROJECT	ENGINEER	DATE

TAG				
QTY.				
MODEL				
VOLTS SINGLE PHASE				
WATTS				
LENGTH				
COLOR				
OPTIONS				
NOTES				

DIMENSIONS

LENGTH	WEIGHT LBS.
24	8
28	8.5
36	9
40	10
48	11
60	13
72	15
84	18
96	20
120	25





- Available in white or ivory with aluminum rod heating element and aluminum fins (steel rod with suffix "B")
- Powder coated 22ga. steel front with 20 ga. junction boxes located on each end of the heater - junction boxes contain quick connect cable clamps and 6" ground lead wires
- Over-temperature thermal limit extends entire length of heated area
- A full length wireway provided along the back of the heater - optional wireway covers are available
- Heater can be mounted to the wall by using the key hole knockouts every 4" at the back of the heater
- Optional built-in thermostats install in the junction box covers
- HEIGHT - 6" DEPTH - 2 1/2"

SUBMITTAL DATA, 2900S SERIES

AGENT	PROJECT	ENGINEER	DATE

TAG				
QTY.				
MODEL				
VOLTS SINGLE PHASE				
WATTS				
LENGTH				
COLOR				
OPTIONS				
NOTES				

DIMENSIONS

LENGTH	WEIGHT LBS.
24	10
28	11
36	11.5
40	13
48	14
60	16
72	19
84	22
96	25
120	31

